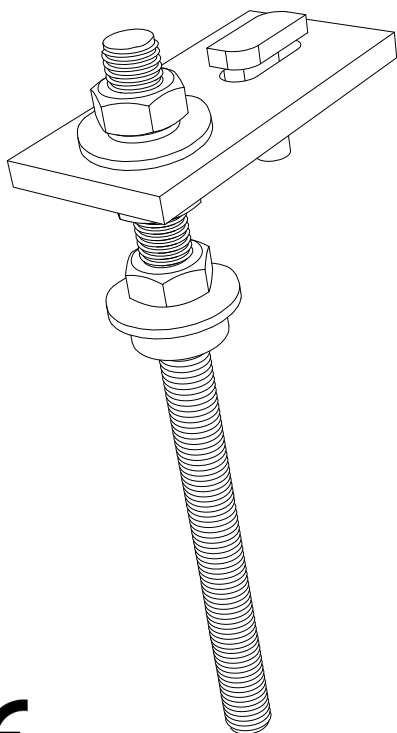


FIJACIÓN ANCLAJE QUÍMICO

CHEMICAL FIXING ANCHORS

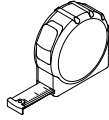
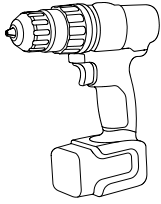
ESPAÑOL
ENGLISH



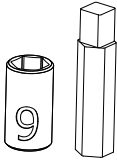
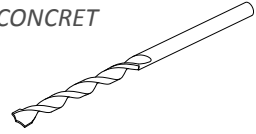
1.06.0026-1027083
1.06.0026-1021083
1.06.0026-1018583



0035



HORMIGÓN
CONCRET



x2



nº17



ESPAÑOL

El montaje debe ser realizado por un experto. Si no se procede correctamente, el soporte puede desajustarse y causar daños a personas u objetos.

- Siga con atención las instrucciones para adaptar el montaje a la posición adecuada.
- Un técnico con conocimientos debe asegurarse que la estructura es adecuada para cumplir la normativa vigente. En la página 11 se facilita la información básica para comprobar la idoneidad de la estructura.
- Si tiene alguna duda contacte con nosotros en www.solarstem.es



ENGLISH

Be sure that this structure is assembled by an expert. Otherwise, the support could work in an inappropriate way, even cause damage to people or objects.

- Follow the instructions to adjust the mounting position.
- An experienced engineer must ensure that the structure is suitable to the current standards. On page 11, you can find the basic information to check the structure suitability.
- If you have any doubt you can contact with us in www.solarstem.es

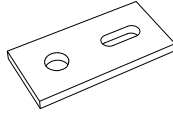
1



1.06.0026-10185
1.06.0026-10210
1.06.0026-10270

TORNILLO VARILLA ROSCADA M10XL
THREADED ROD BOLT M10XL

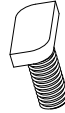
2



1.09.0008-83

PLATINA DE ACERO 83x40x6mm
STEEL PLATE 83x40x6mm

3



1.05.0016-M820

TORNILLO 28/15 M8x20
HAMMER BOLT 28/15 M8x20

4



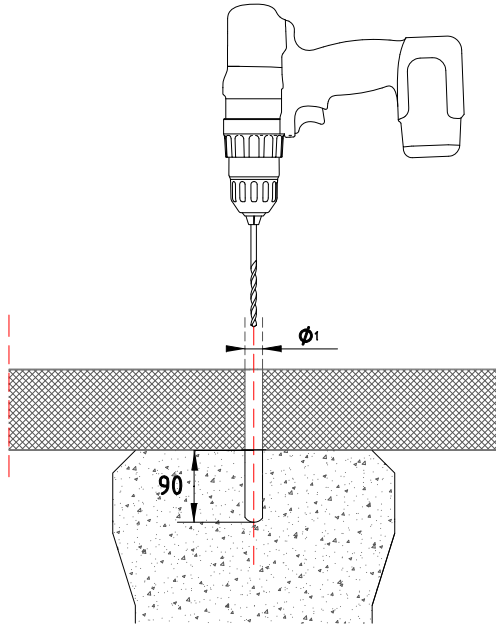
1.05.0012-M8

TUERCA DIN6923 M8
HEX FLANGE NUT DIN6923 M8

CONTENIDO DE LOS KIT / KIT COMPONENTS

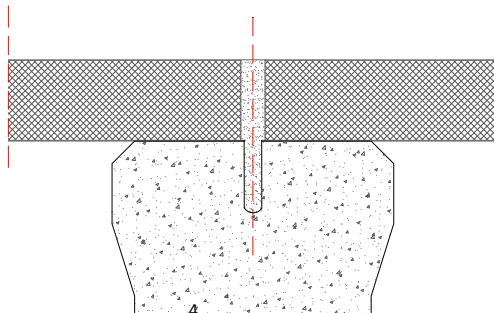
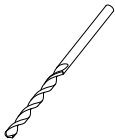
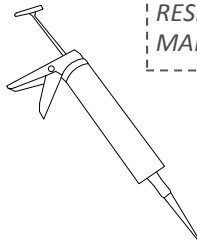
N	DESCRIPCIÓN DESCRIPTION	REFERENCIA REFERENCE	FIJACIÓN QUÍMICA	
			ANCHOR FOR WOOD/CONCRETE M12x300	
			1.06.0026-10185	
			1.06.0026-10210	
			1.06.0026-10270	
1	TORNILLO VARILLA ROSCADA THREADED ROD BOLT	M10x185 mm M10x210 mm M10x270 mm	1.06.0026-10185 1.06.0026-10210 1.06.0026-10270	1
2	PLATINA DE ACERO STEEL PLATE	83x40x6mm 83x40x6mm	1.09.0008-83	1
3	TORNILLO HAMMER BOLT	28/15 M8x20 28/15 M8x20	1.05.0016-M820	1
4	TUERCA HEX FLANGE NUT	DIN6923 M8 DIN6923 M8	1.05.0012-M8	1

1

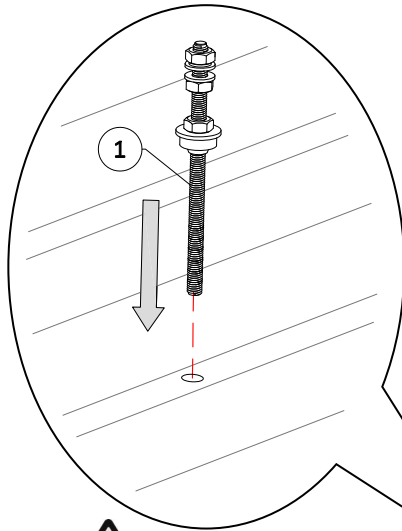


RESPECTAR LAS ESPECIFICACIONES
DEL FABRICANTE DE LOS TACOS
QUÍMICOS

*RESPECT THE CHEMICAL ANCHORS
MANUFACTURERS SPECIFICATIONS*



2

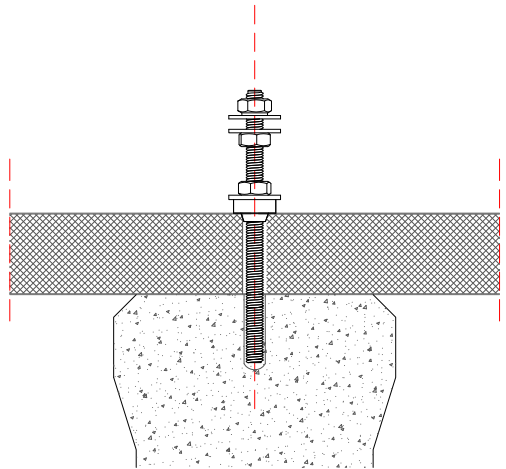


TACO QUÍMICO

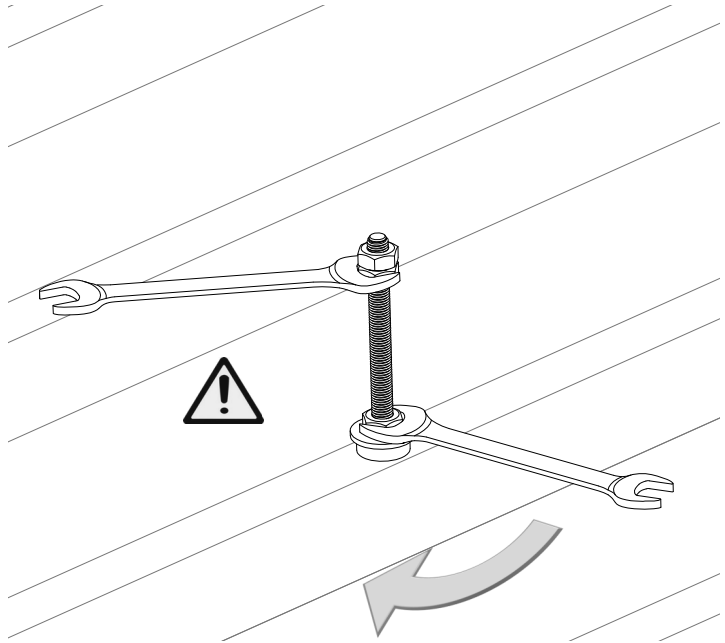
No suministrado

CHEMICAL ANCHOR

Not supplied



4



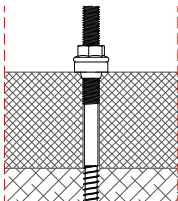
Nº17



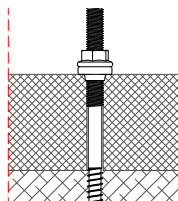
INDICACIONES PARA EPDM
EPDM INDICATIONS



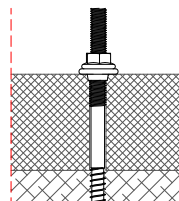
SIMPLEMENTE AJUSTADO
SIMPLY ADJUSTED



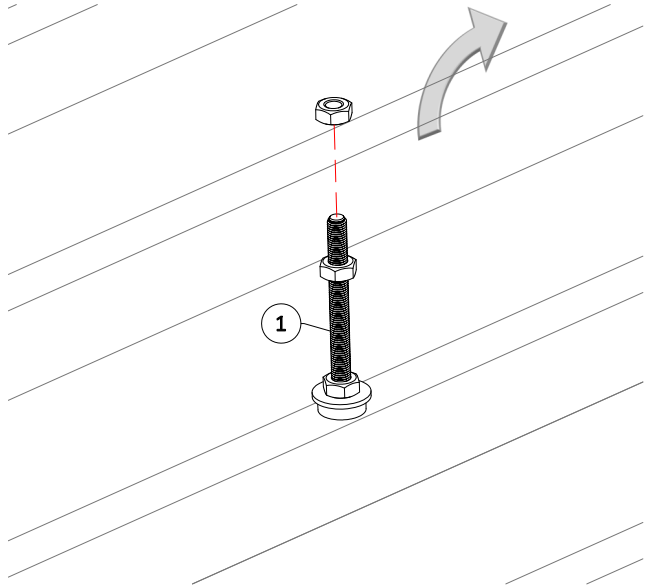
LIGERAMENTE APLASATADA
SLIGHTLY SMASHED



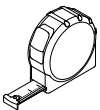
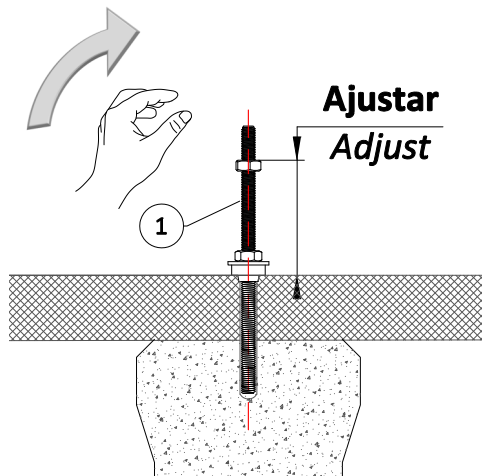
DEMASIADO APLASATADA
TOO SMASHED



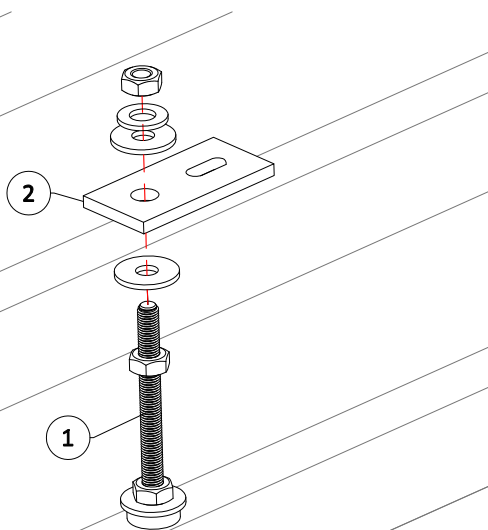
5



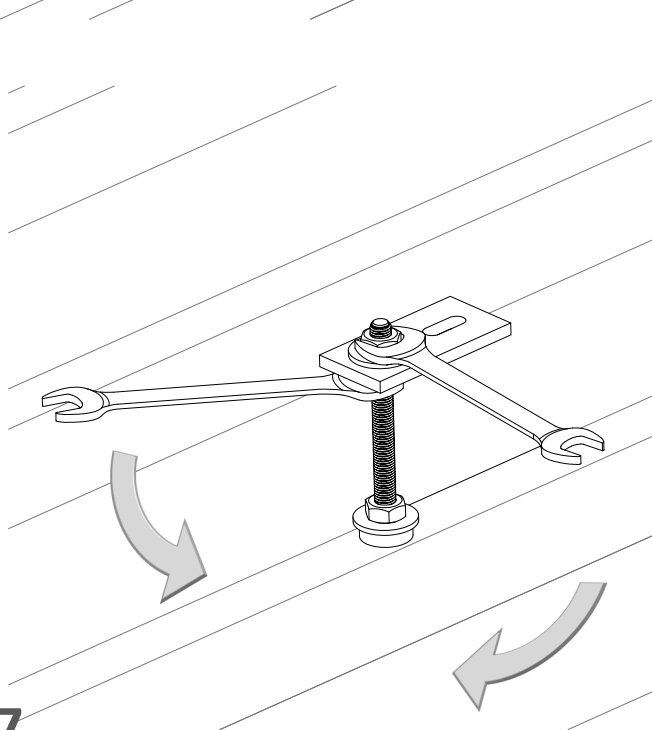
6



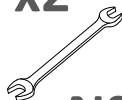
7



8

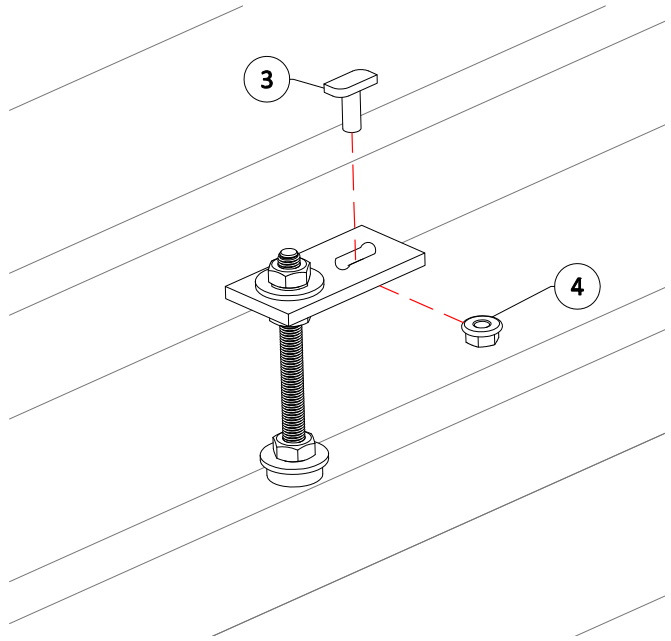


x2



N°17

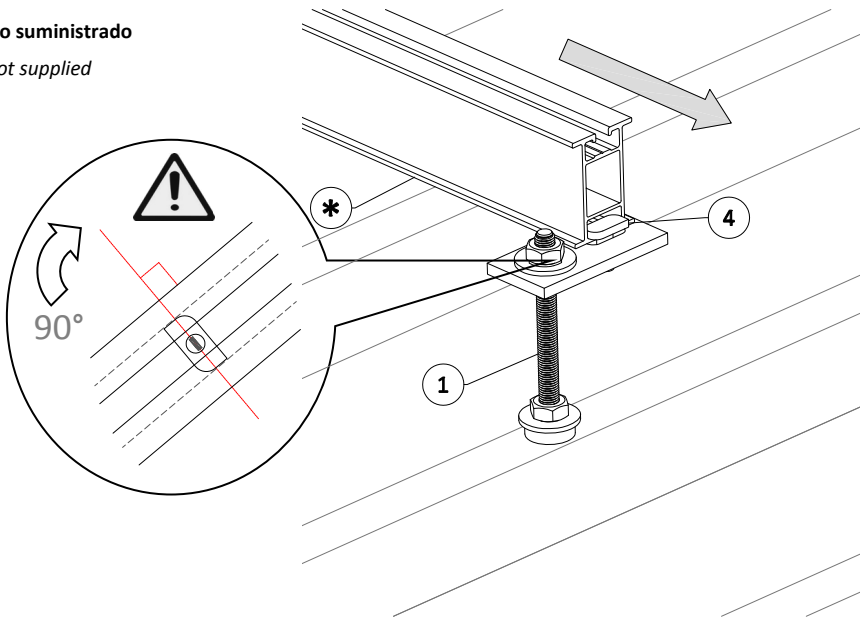
9



10

(*) No suministrado

Not supplied



PROPIEDADES DE LOS MATERIALES / MATERIAL PROPERTIES

MATERIALES / MATERIALS

	Par Apriete <i>Torque</i> (Nm)	Fy _{0,2} (N/mm ²)	Fu (N/mm ²)	E (N/mm ²)	G (N/mm ²)	v	ρ (Kg/m ³)
Tornillería M8, Acero Inoxidable A2-70 <i>Fasteners M8, Stainless Steel A2-70</i>	18	450	700				
Varilla Roscada, Acero Inoxidable A2-70 <i>Threaded rod, Stainless Steel A2-70</i>		450	700				

NOTAS / NOTES

CE
0035

Solarstem® 2013

c/Cal Ros dels Ocells, 20
08403 Granollers (Barcelona) SPAIN
TALLERES CENDRA, S.A.

15

0035-CPR-1.01095-DC02

EN 1090-1:2009+A1:2011

Componentes estructurales y kits para estructuras de
acero ECX1 según EN 1090-2

Conjunto de componentes estructurales de acero

Tolerancias en la información geométrica: EN 1090-2

Tenacidad a la fractura: 27 J a 0°C

Reacción al fuego: Clase A1

Durabilidad: EN 1090-2

Características estructurales:

Fabricación: Conforme las especificaciones de los componentes y la Norma EN 1090-2. Clase de ejecución ECX 1.

Solarstem® 2013

c/Cal Ros dels Ocells, 20 | Pol. Ind. Coll de la Manya

08403 Granollers (Barcelona)

SPAIN

www.solarstem.es

TALLERES CENDRA, S.A.