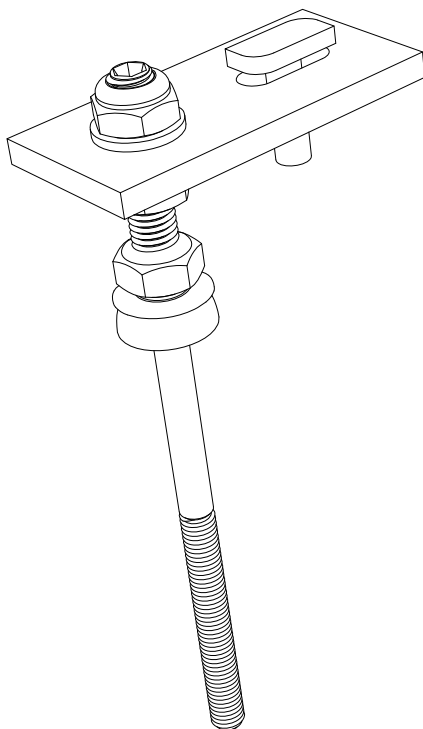


FIJACIÓN CORREA DE ACERO M10x50-8xL-83

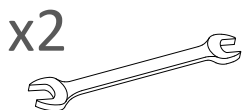
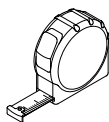
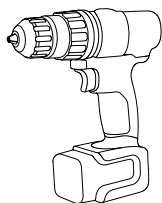
ESPAÑOL
ENGLISH

*ANCHOR FOR STEEL BEAM
M10x50-8xL-83*

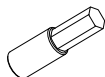


1.06.0004-805083
1.06.0004-1255083
1.06.0004-1605083

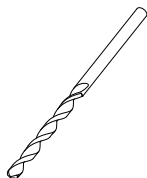




nº17



nº5



nº5



ESPAÑOL

El montaje debe ser realizado por un experto. Si no se procede correctamente, el soporte puede desajustarse y causar daños a personas u objetos.

- Siga con atención las instrucciones para adaptar el montaje a la posición adecuada.
- Un técnico con conocimientos debe asegurarse que la estructura es adecuada para cumplir la normativa vigente. En la página 11 se facilita la información básica para comprobar la idoneidad de la estructura.
- Si tiene alguna duda contacte con nosotros en www.solarstem.es



ENGLISH

Be sure that this structure is assembled by an expert. Otherwise, the support could work in an inappropriate way, even cause damage to people or objects.

- Follow the instructions to adjust the mounting position.
- An experienced engineer must ensure that the structure is suitable to the current standards. On page 11, you can find the basic information to check the structure suitability.
- If you have any doubt you can contact with us in www.solarstem.es

1



1.06.0006-8050
1.06.0006-12550
1.06.0006-16050

AUTO-ROSCANTE M10 X50-8
SELF TAP. SCREW M10X50-8

2



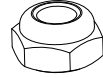
TUERCA DIN934 M10
NUT DIN934 M10

3



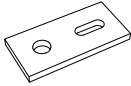
ARANDELA DIN125 M10
WASHER DIN125 M10

4



1.05.0017-M10
TUERCA SEGURIDAD DIN985M10
SECURITY NUT DIN985M10

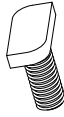
5



1.09.0008-83

PLATINA DE ACERO 83x40x6mm
STEEL PLATE 83x40x6mm

6



1.05.0016-M8x20

TORNILLO 28/15 M8x20
HAMMER BOLT 28/15 M8x20

7



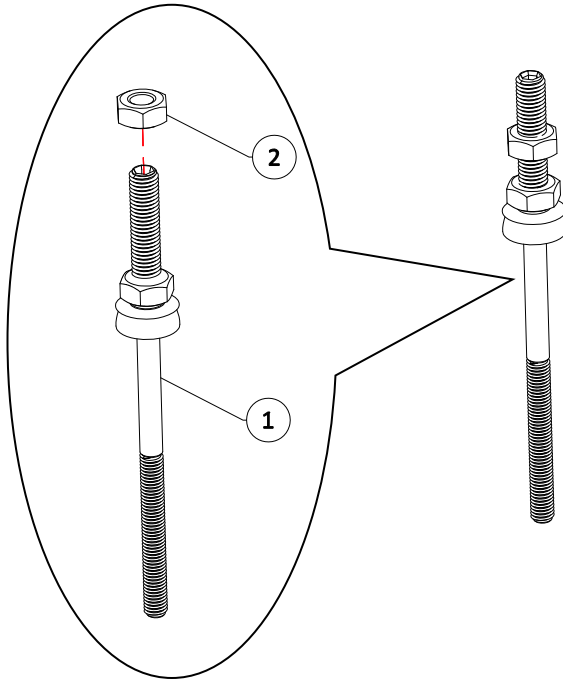
1.05.0012-M8

TUERCA DIN6923 M8
HEX FLANGE NUT DIN6923 M8

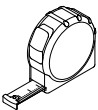
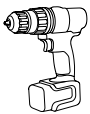
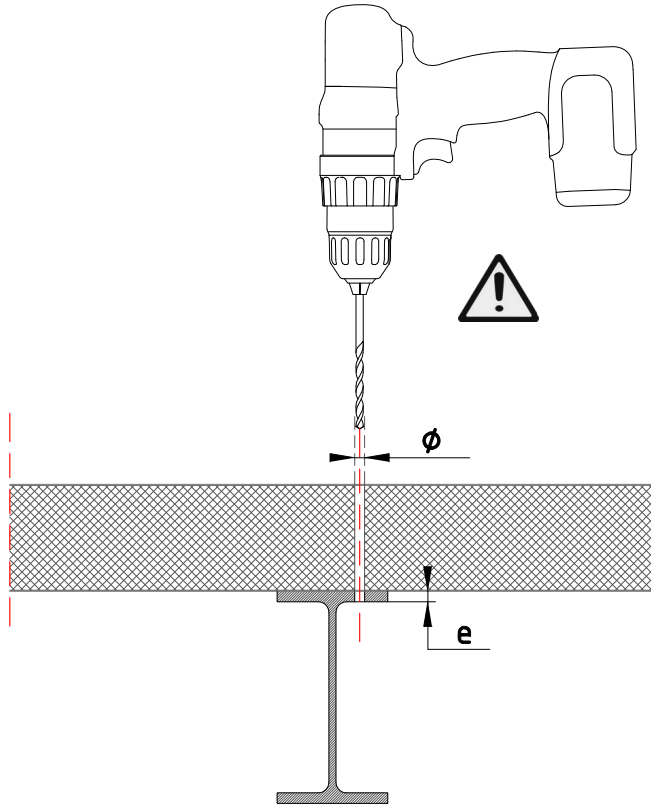
CONTENIDO DE LOS KIT / KIT COMPONENTS

N	DESCRIPCIÓN DESCRIPTION	REFERENCIA REFERENCE	FIJACIÓN CORREA DE ACERO M10x50-8xL-83 ANCHOR FOR STEEL BEAM M10x50-8xL-83	
			1.06.0004-805083	1.06.0004-1255083 1.06.0004-1605083
1	TOR. AUTO-ROSCANTE M10X50-8 SELF TAPPING SCREW M10X50-8	80 mm 1.06.0006-8050 125 mm 1.06.0006-12550 160mm 1.06.0006-16050		1
2	TUERCA NUT	DIN 934 M10 DIN 934 M10	1.05.0017-M10	1
3	ARANDELA WASHER	DIN 125 M10 DIN 125 M10	1.05.0020-M10	2
4	TUERCA DE SEGURIDAD SECURITY NUT	DIN 985 M10 DIN 985 M10	1.05.0025-M10	1
5	PLATINA DE ACERO STEEL PLATE	83x40x6mm 83x40x6mm	1.09.0008-83	1
6	TORNILLO HAMMER BOLT	28/15 M8x20 28/15 M8x20	1.05.0016-M820	1
7	TUERCA HEX FLANGE NUT	DIN6923 M8 DIN6923 M8	1.05.0012-M8	1

1

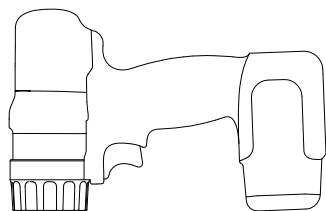
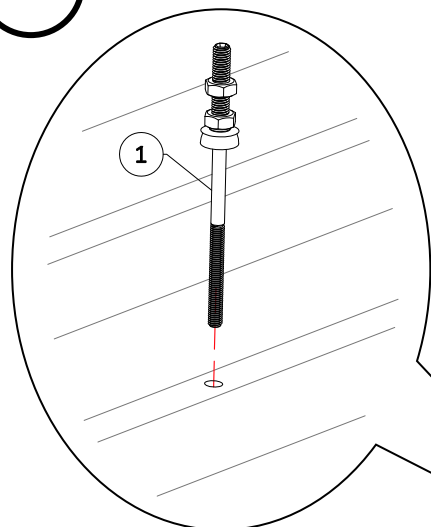


2



e SUBESRTUCTURA <i>e SUBSRTUCTURE</i>	Ø PRETALADRO Ø PRE DRILL HOLE
e < 5.0 mm	6.8 mm
5.0 ≤ e < 7.5 mm	7.0 mm
7.5 ≤ e < 10.0 mm	7.2 mm
10.0 ≤ e	7.4 mm

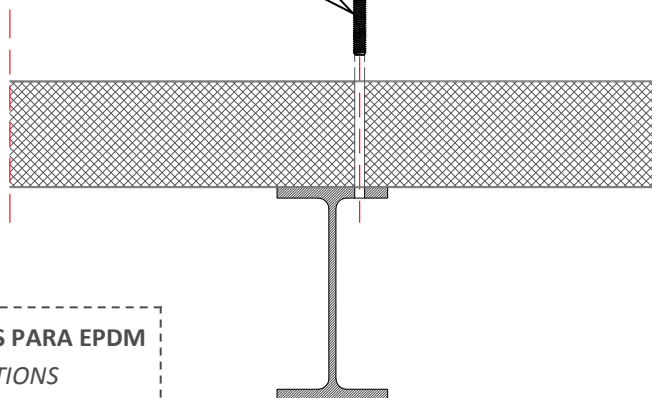
3



1



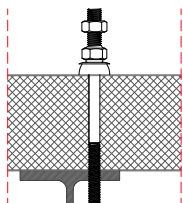
n°5



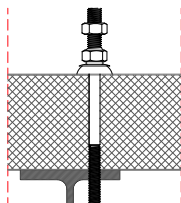
INDICACIONES PARA EPDM
EPDM INDICATIONS



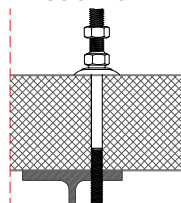
SIMPLEMENTE AJUSTADO
SIMPLY ADJUSTED



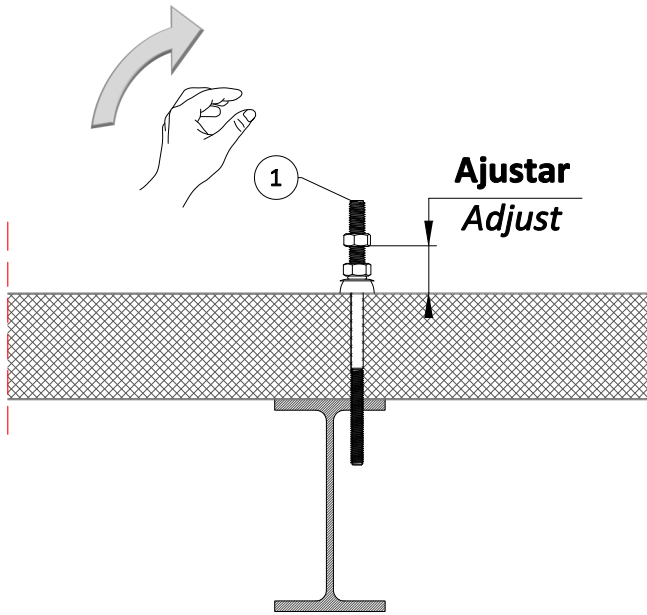
LIGERAMENTE APLASATADA



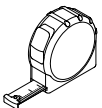
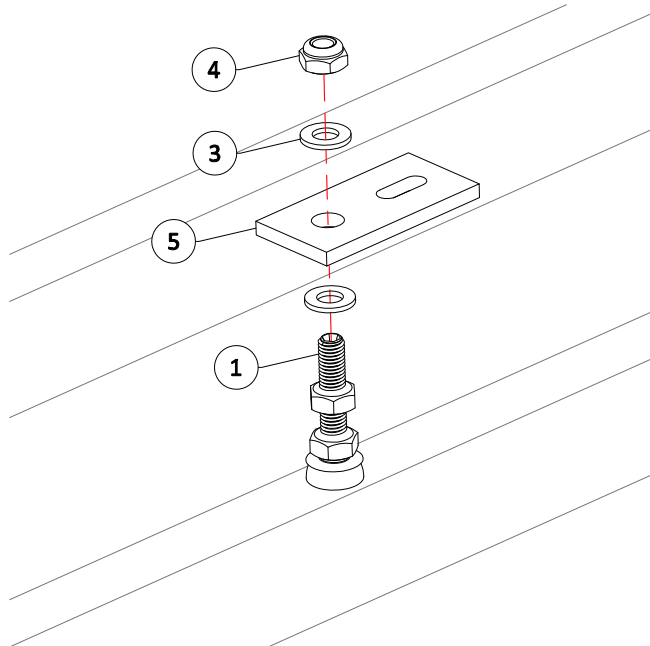
DEMASIADO APLASATADA
TOO SMASHED



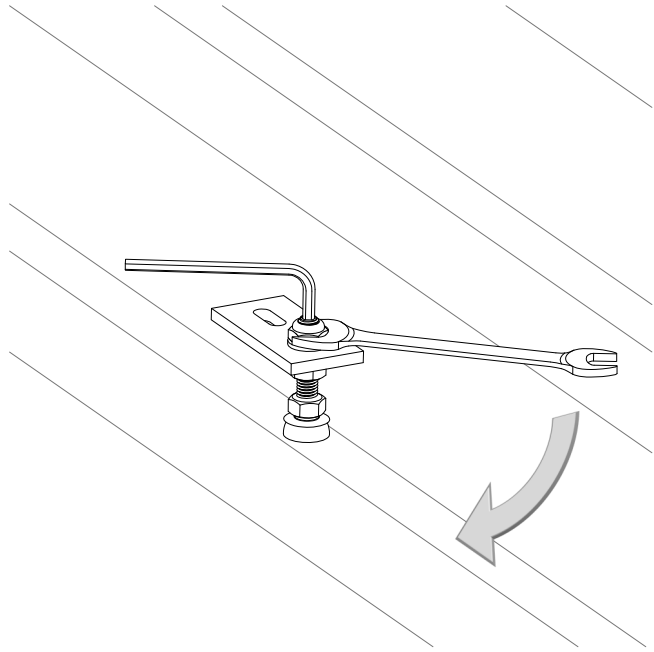
4



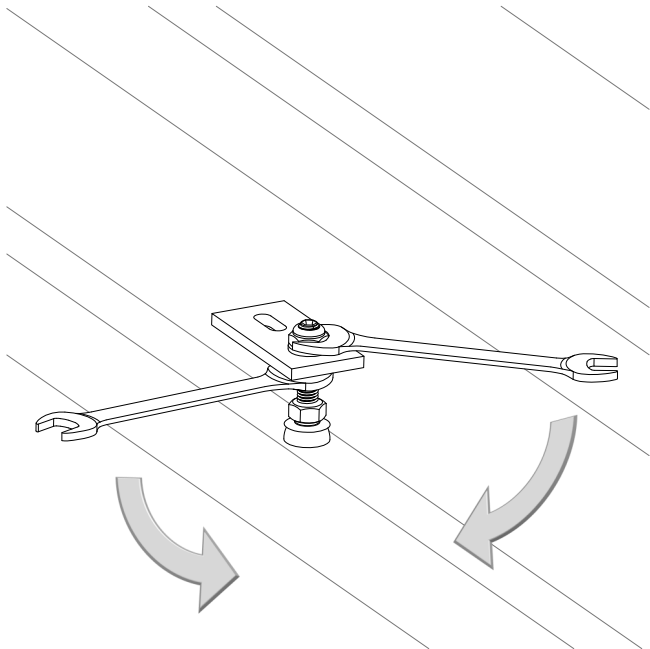
5



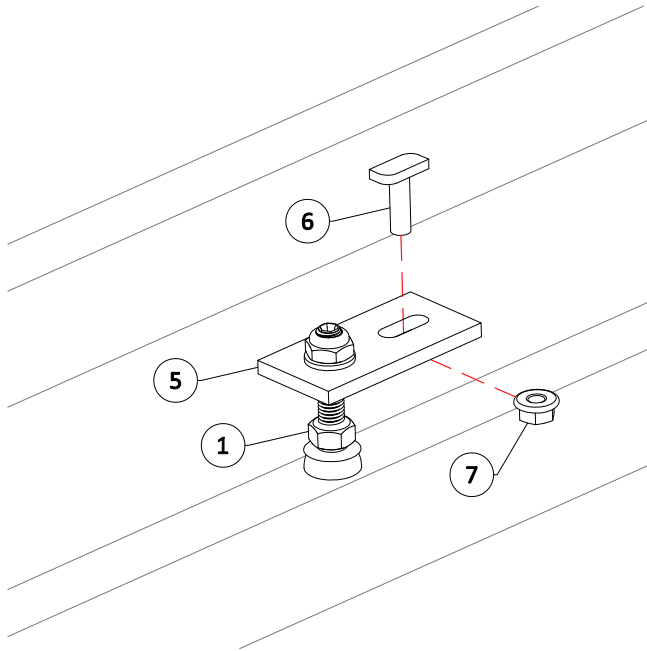
6



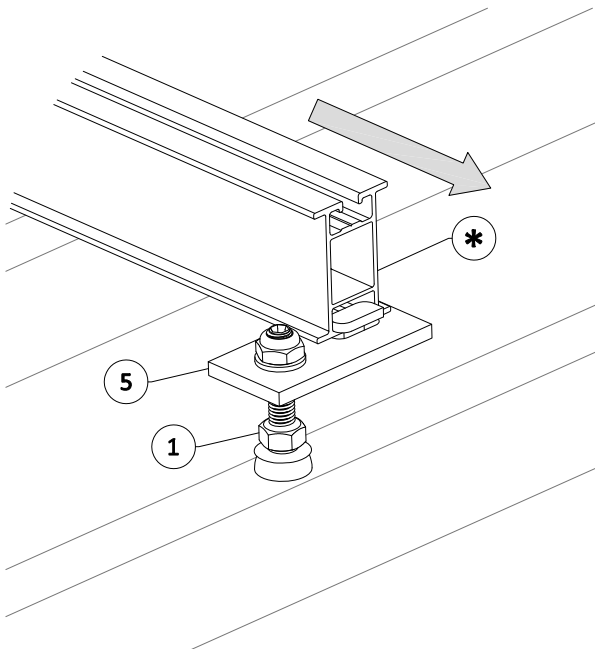
7



8

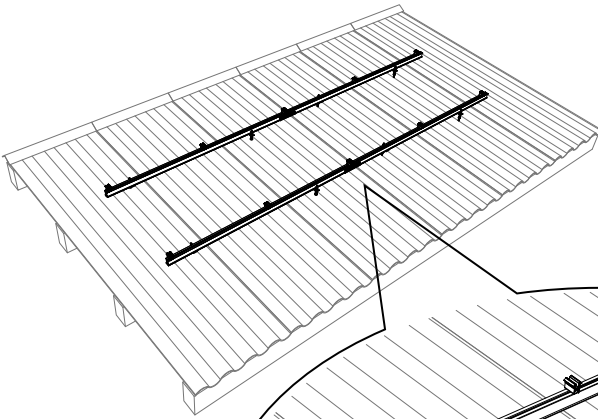


9

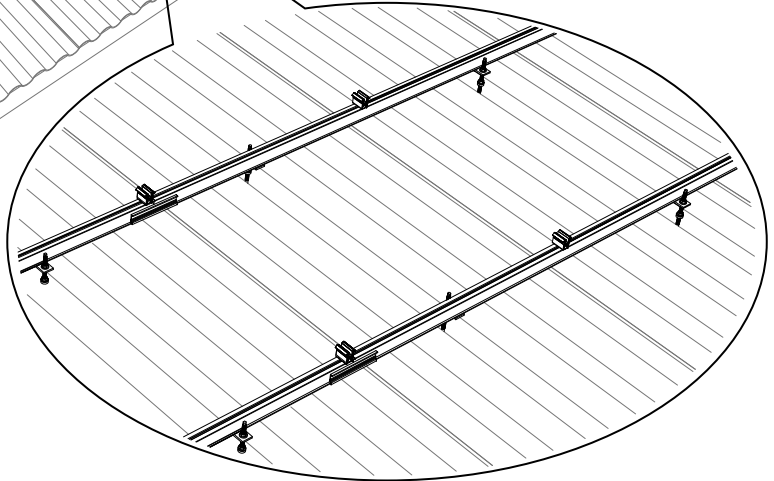


COLOCACIÓN DEL PERFIL BASE SOBRE LA PLETINA

POSITIONING OF THE BEAM ON THE STEEL PLATE



ALTERNAR LOS LADOS DE
APOYO DEL PERFIL BASE EN
LA PLETINA
CHANGE THE BEAM SUPPORT
SIDE EVERY ANCHOR



OPCIÓN PREFERENTE

BEST OPTION



OPCIÓN POSIBLE

POSSIBLE OPTION



PROPIEDADES DE LOS MATERIALES / MATERIAL PROPERTIES

MATERIALES / MATERIALS

	Par Apriete <i>Torque</i> (Nm)	F _{Y0,2} (N/mm ²)	F _u (N/mm ²)	E (N/mm ²)	G (N/mm ²)	v	ρ (Kg/m ³)
Tornillería M8, Acero Inoxidable A2-70 <i>Fasteners M8, Stainless Steel A2-70</i>	18	450	700				
Doble rosca, Acero Inoxidable A2-70* <i>Double screw, Stainless Steel A2-70*</i>		450	700				

* Según homologación / *Depending on approval*

Z-1 4.4-532

 0035
<p>Solarstem® 2013</p> <p>c/Cal Ros dels Ocells, 20 08403 Granollers (Barcelona) SPAIN TALLERES CENDRA, S.A.</p> <p>15</p> <p>0035-CPR-1.01095-DC02</p>
<p>EN 1090-1:2009+A1:2011</p> <p>Componentes estructurales y kits para estructuras de acero ECX1 según EN 1090-2</p> <p>Conjunto de componentes estructurales de acero</p>
<p>Tolerancias en la información geométrica: EN 1090-2 Tenacidad a la fractura: 27J a 0°C Reacción al fuego: Clase A1 Durabilidad: EN 1090-2</p> <p>Características estructurales: Fabricación: Conforme las especificaciones de los componentes y la Norma EN 1090-2. Clase de ejecución ECX 1.</p>

Solarstem® 2013
c/Cal Ros dels Ocells, 20 | Pol. Ind. Coll de la Manya
08403 Granollers (Barcelona)
SPAIN
www.solarstem.es

TALLERES CENDRA, S.A.